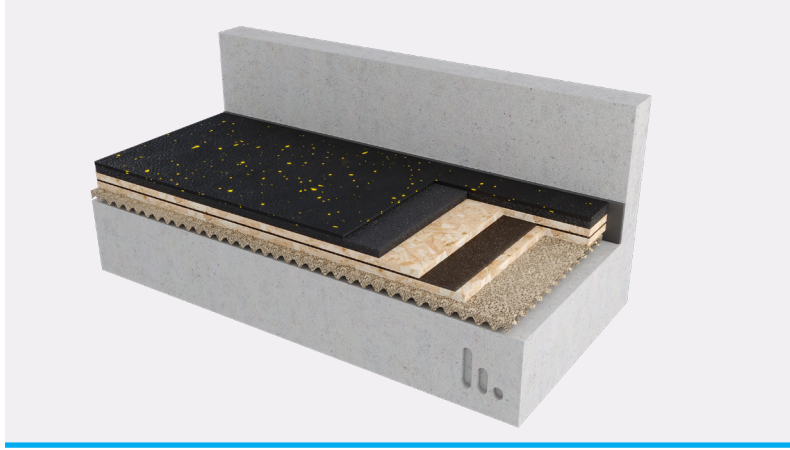


## Stravigym SP<sup>\*</sup>

### Datasheet



Stravigym SP is our “Standard Performance” gym system. It is a continuous support floating floor that provides great performances in the reduction of low-impact sound while offering a high level of comfort for any type of training.

Stravigym SP is a low-profile solution, ideally suited for areas with restricted additional floor build-up.

It's compatible with most conventional floor coverings and so selection of the final flooring can be made independent on the acoustic solution.



#### CHARACTERISTICS

- A variety of load distribution components can be used, such as plywood or OSB board
- Two impact absorption layers are available: Stravigym GympactLayer-20\*\* & Stravigym GympactLayer-45\*\*\* (the selection is made depending on the type of gym activities)
- The floor covering is not included in standard Stravigym solutions but a Stravigym GympactFloor products are available upon request
- Stravigym systems are compatible with almost all types of gym floor covering (please check with CDM Stravitec & floor manufacturer prior to installation)
- Stravigym SP is a lightweight floating floor options with reduced/minimal overall thickness (low additional height and weight)
- Stravigym SP is quick and easy installation
- If required, Stravigym SP can easily be dismantled and reinstalled

<sup>\*</sup>Previously known as CDM-GYM-SP  
<sup>\*\*</sup>Previously known as GYMPACT20  
<sup>\*\*\*</sup>Previously known as GYMPACT45

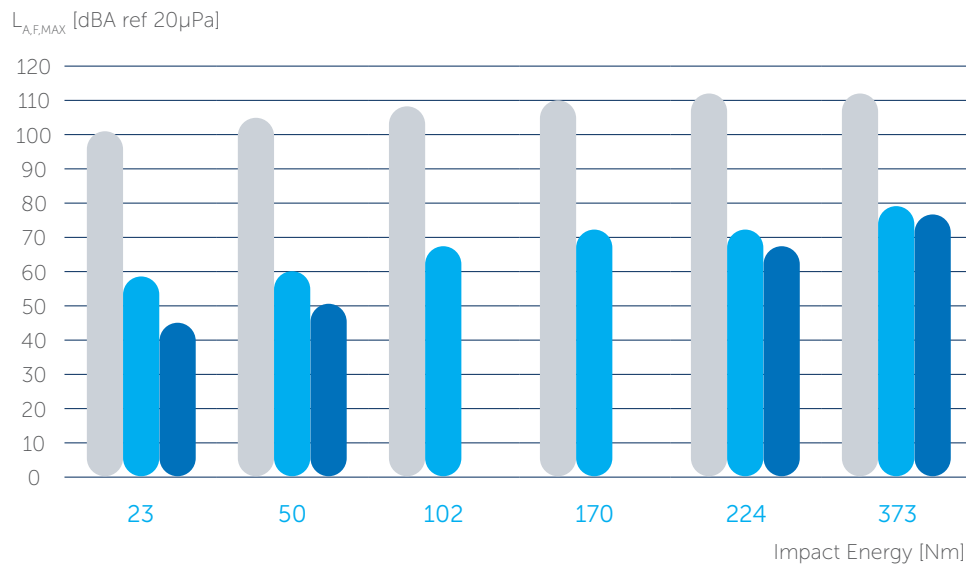


### Drop-Weight Tests

#### Test Report Riverbank AN17-010\* and AN19-005\* - Test Setups

- 9.5 mm Stravigym GympactFloor-R
- Stravigym GympactLayer-20 or Stravigym GympactLayer-45
- Plywood 19 mm
- Damping Layer
- Plywood 19 mm
- Stravigym Mat-W<sub>x</sub>
- Concrete slab 200 mm

#### Overall Noise Level



- Bare Slab (200 mm)
- Stravigym SP with GympactLayer-20
- Stravigym SP with GympactLayer-45

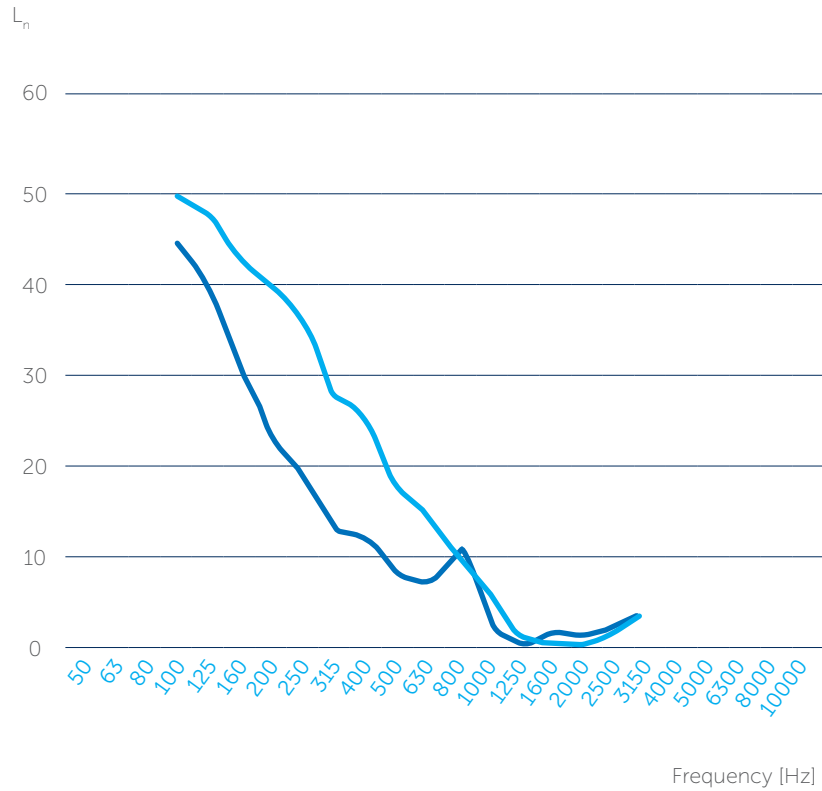
\*Test report available upon request

# Standard Test Method for Laboratory Measurement of Impact Sound Transmission

## Test Report Riverbank IN17-40\* and IN19-034\* - Test Setups

Note: the test setups are the same as used for the drop-weight test..

### Acoustical Isolation



<sup>(1)</sup>Calculated according to ISO 717-2, based on ASTM measurement

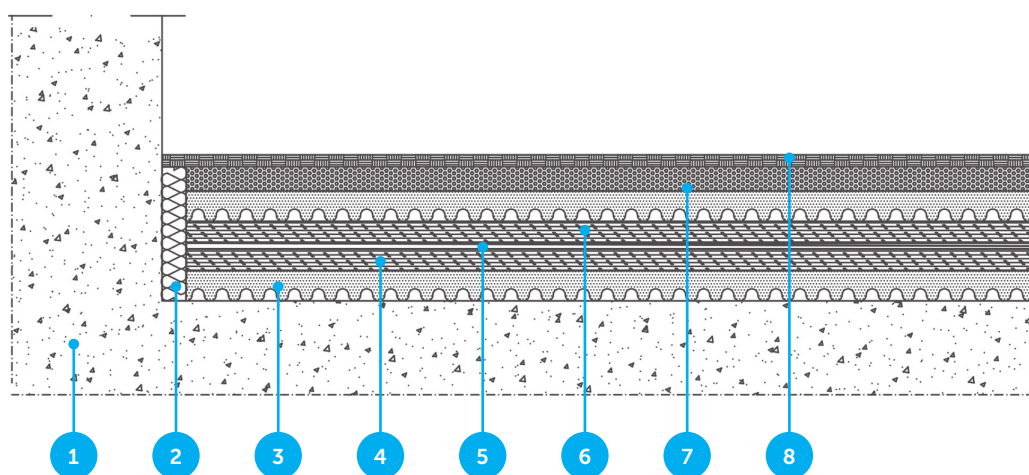
\*Test report available upon request



## TYPICAL ASSEMBLY

### Stravigym SP

1. Structural slab
2. Perimeter Strip
3. Stravigym Mat-W<sub>x</sub>
4. Plywood load distribution layer 1 (or other suitable load distribution layer)
5. Damping Layer
6. Plywood load distribution layer 2 (or other suitable load distribution layer)
7. GympactLayer\*\*
8. Floor covering (a StravigymFloor solution or by others)



**Note:** additional information about installation is available upon request. .

\*\*All Stravigym standard systems can be combined with different Stravigym GympactLayer  
The right selection of Stravigym GympactLayer allows choosing the best solution for the different gym activities

## DISCLAIMER

This information is accurate to the best of our knowledge at the time of issue. Information, data and recommendations provided are based on industry accepted testing and prior product usage. It is intended as descriptive of the general capabilities and performance of our products and does not endorse applicability for any particular project. We reserve the right to change products, performance, and data without notice. This document replaces all information supplied prior to the publication hereof.



Vismeerstraat 3 - 5384 VL Heesch  
0800 55555 44  
info@delta-l.nl  
<https://www.delta-l.nl>

IBAN: NL79 RABO 0375036717  
BIC: RABONL2U  
BTW: NL811318539B01  
KvK: 08071864

## Delta-L B.V. | CDM Stravitec Nederland

Delta-L is specialist op het gebied van geluidsisolatie en trillingsisolatie en ontwerpt, levert en monteert diverse systemen voor akoestische ontkoppelingen in de bouw en industrie.

Delta-L vertegenwoordigt CDM Stravitec op de Nederlandse markt. CDM Stravitec is opgericht in 1951 en is marktleider op het gebied van akoestische oplegsystemen voor de bouw en industrie en is actief in tientallen landen (30+ vestigingen wereldwijd).

Door onze expertise, jarenlange ervaring en grote database aan meetresultaten van zowel interne en externe laboratorium metingen als in situ metingen hebben we door de jaren heen een uitgebreid assortiment aan akoestische materialen ontwikkeld, welke we op een slimme manier verwerken in diverse akoestische systemen.

Tevens zijn wij hierdoor in staat u adequaat van dienst te zijn bij elke stap in het proces: analyse van het geluid of trilling probleem, het aanleveren van een akoestisch ontwerp, optimalisatie van het ontwerp, productie, levering en montage.

Er wordt continu gewerkt aan innovatie en optimalisatie van de akoestische systemen om uw wensen en eisen om te zetten in een deskundig advies op maat.